

Conducting business in the technology age

GE SymSuite—the IP video security platform
that keeps you in tune with the times



SymSuite provides a segue to true digital surveillance

SymSuite is a true digital video system. Instead of using coaxial cable to transmit video signals and twisted-pair wiring to transmit data, SymSuite sends digital video and control data across any IP network—the same kind of network your computers use.

At the heart of SymSuite is SymSecure. SymSecure is the software that lets you configure your system, manage thousands of cameras (watch 32 live at one PC viewing station), and search for and play back recorded video. It's the conductor that ensures that all your system components work in harmony.

Old *and* new components.



education



industrial



banking



transportation



airport security



retail



banking



Don't miss a beat

SymVeo, an IP color camera, offers extremely high resolution and the industry's best dynamic range.



Choose your conductor

SymSecure: The backbone of an enterprise-class system. Archive video on network storage. Save audit trails, event logs and bookmarks. Set up a "virtual matrix."

SymNav: For smaller systems, this simple viewing software lets you watch live video from any camera or stored video from any SymDec recorder in your system.



Six reasons now is the time for GE SymSuite

1. Look out for your business no matter where you are

As long as you have Internet access, you can watch streaming video from any camera in your network. You can also search for and retrieve recorded images from any networked digital recorder or server.

2. Digital networks keep your security system secure

Analog video signals are easily compromised by eavesdroppers or hackers. But digital video signals are encoded as they travel over your network, making them much less susceptible to tampering. You can also assign access privileges to control who accesses your cameras and recorders.

3. Scalability ensures you're never left behind

One camera. One thousand cameras. Ten thousand cameras. With SymSuite and SymSecure, it makes no difference. Expanding your system becomes as easy as adding a new node to your network.

4. GE provides the highest quality and reliability

While most competitors use VGA or 4CIF resolution, GE's SymSuite relies on higher-quality D1 resolution. And SymVeo is the only camera on the market using Xposure™ technology to expose each pixel individually, delivering detailed pictures in all lighting conditions.

5. "Hybrid" technology allows for graceful transitions

SymSuite components work with your existing components— analog or digital. GE makes it easy for users with analog components to begin using an IP security system.

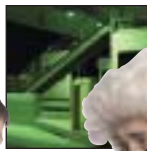
6. Moving to IP security makes fiscal sense

Making the transition to an IP-based security system is a sound investment. IP networks involve less installation time, and they require fewer personnel to operate. And with GE's SymNet encoder-decoders, you can keep your existing cameras and monitors.

industry



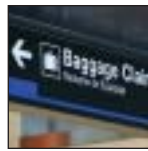
transportation



education



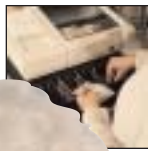
airport security



government



retail



Remember your lines

SymDec video streaming recorders feature D1 resolution and MPEG-4 compression.

Stay in tune

SymNet encoders/decoders can encode analog video to digital video or decode digital video for analog monitors.

U.S.
T 888 GE SECURITY
F 541 752 9097

www.gesecurity.com

© 2005 General Electric Company
All Rights Reserved

Asia
T 852 2907 8108
F 852 2142 5063

Australia
T 61 3 9259 4700
F 61 3 9259 4799

Europe
T 32 2 725 11 20
F 32 2 721 86 13

Latin America
T 305 593 4301
F 305 593 4300

SymSecure—setting a digital tempo for your system

SymSecure digital video management software provides a quick and easy way to configure and control your video security system from any place, at any time. SymSecure uses the latest IP-networking technology, and it works with all SymSuite digital video products. SymSecure makes your security operations more efficient, saving you time and money, and increasing your security staff's effectiveness.

- 1 Control pan-tilt-zoom cameras**
Pan, tilt and zoom. Call up presets or initiate camera tours. SymSecure supports 25 PTZ protocols.
- 2 Navigate small or large systems**
SymSecure's easy-to-use tree navigation makes using your system as easy as opening files on your PC.
- 3 Manage all of your cameras**
SymSecure can manage thousands of cameras. View up to 16 cameras at a time on one monitor. Or use dual PC monitors and view up to 32 cameras at a time.
- 4 Manage alarms**
Respond to alarms generated by SymSecure's integrated video motion detection or from external inputs.

Control a virtual switcher

SymSecure's virtual matrix capability provides hardware switcher functionality any place, any time over IP.



imagination at work