

# The Secure Choice



# The GE advantage

Clearer images. Faster searches.  
More storage. GE digital recorders offer all that... and more.



## Embedded operating system ensures your recorder's working when you need it

GE digital recorders use a proprietary, embedded operating system. The result? Your GE recorder won't be prone to system crashes like PC-based recorders: It will deliver continuous, reliable performance. And the stored video that's so important to protecting your facility is safer from worms and viruses.

## Viewing software lets you access your recordings while at home or on the road

With our WaveReader software, you can connect to any GE digital recorder in your network to view live or recorded images. Or connect using a modem. WaveReader opens your recorders to users who need access to them, and it enables you to check in on the business while you're at home or on the road.

## Special interfaces customize your recorder for your application

With a ProBridge interface, you can use your GE recorder with ATMs, cash registers and fuel station pumps to capture and associate receipt text with your recordings. Now you can look up clips by transaction number, cashier ID, or text like "void" or "no sale."

## Recent technology breakthroughs enable you to automate your recording system

At GE, we put our imaginations to work every day to figure out new ways to make your recorder more useful. Like our new VideoIQ human detection technology. Using a set of neural network algorithms we refer to as ConceptCoding™, VideoIQ "looks" through your cameras to detect people in areas where they're not supposed to be. When it detects human motion, it can trigger your recorder to capture the event. If your recorder was already recording in time-lapse mode, VideoIQ can trigger a higher record rate. It can even trigger the recorder to alert a guard or engage police auto-dial.

## Compatibility enables your recorder to enhance your other systems

GE digital recorders work hand-in-hand with other GE video surveillance systems. Using a single keypad or computer, you can operate your recorders, control which monitors display your video, and control the position of pan/tilt cameras.

GE digital recorders even work with your access control system. Your system operators can access real-time video to verify identity of users or respond to alarms—from one user interface.



## Find what you need right now

One button gives you access to quick searches by time, date, camera number or text from an ATM or cash register receipt. You can even search for video clips with motion in a target area that you define.

## Access images where it's convenient

You're not chained to a VCR anymore. With GE's WaveReader software or Microsoft Internet Explorer, you can access crisp images from your network-ready digital recorder. And you can keep tabs on your system's health using WaveWatch software.

## Get to work quickly with familiar controls

Even our most sophisticated digital recorders have familiar VCR-like controls that make operation intuitive and easy.

## New system or system upgrade

If you're building a new system or upgrading your existing system, you can take advantage of the advanced capabilities of our multichannel recorders. Our Digital Video Multiplexer/Recorder (DVMRe & StoreSafe) models record video from 4, 10 or 16 cameras—no separate multiplexer is necessary. They incorporate video motion detection, which enables you to reduce your investment in alarm equipment. Some recorders enable you to play back recorded images while you continue to capture new ones. Some recorders even let you send video to up to five monitors—during viewing, you select which cameras display on which monitors.

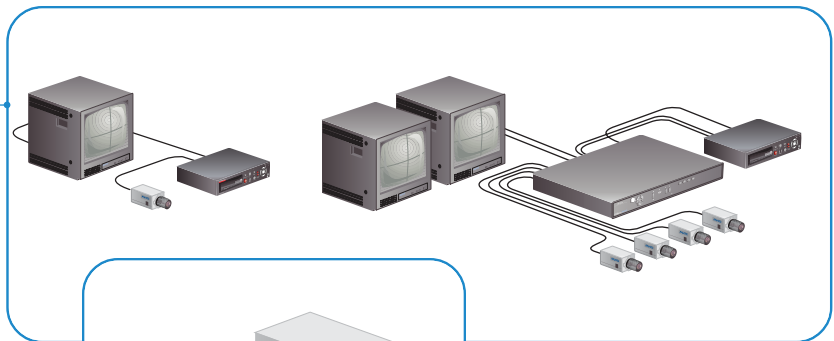
## WaveJet™ technology doubles storage capacity

WaveJet technology is the latest addition to the StoreSafe Pro II and DVMRe CT II digital recorders. This compression technology allows you to record twice as much information on the same size of hard drive. You can capture high-quality color images for anywhere from a few hours to more than three years, depending on the setting.

# How to choose a recorder that's right for you

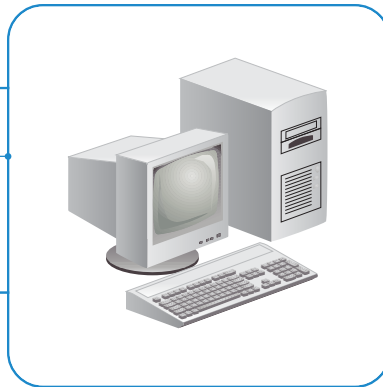
### "Digital VCR"

Whether your system is one camera, one monitor and one VCR or a larger system with a multiplexer, additional monitors and cameras, replacing your VCR with a GE digital video recorder is quick and easy.



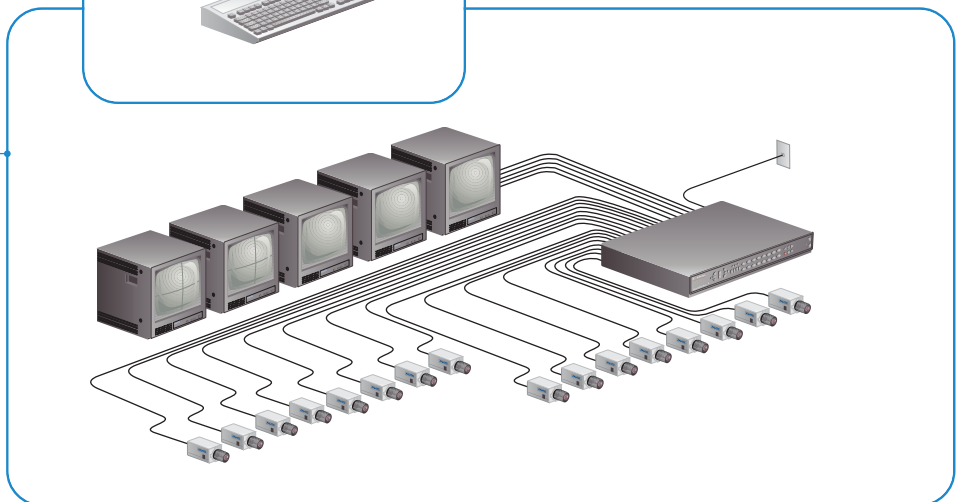
### Network ready

When you connect your GE digital video recorder to your network, you can watch live or recorded video from the recorder using a networked PC.\*



### System in a box

When you're building a new system, GE's multichannel recorders form the heart of the system, providing recording, multiplexing and even switching capabilities.



\*Ethernet capability standard on DVMRe, StoreSafe product families.

# A digital recorder for every application

GE offers a wide variety of digital video recorder models, from a VCR replacement like the VDR—*Video Digital Recorder*—to network-ready multichannel recorders like the DVMRe/Store-Safe—*Digital Video Multiplexer/Recorder with Ethernet*. With so many choices, we have a model that's right for your application. We also offer the DVSe—*Digital Video Storage with Ethernet*—to expand the storage capacity of your digital recording system.



**Digia:** Replace your traditional VCR/multiplexer combination with the low-cost, compact, four-channel digital video recorder. The Digia brings all the benefits of digital security monitoring to the budget conscious small business owner.



The **DVMRe Matrix** is the heart of this medium. It can switch video to four monitors in the security room or to a fifth monitor in his office.

A four-channel **StoreSafe** digital recorder offers everything this jewelry store needs, including the ability to start creation of an evidence CD by pressing one button.



**DVMRe Triplex:** This multichannel recorder adds Triplex capability: Watch live and playback images while it records. Display multiscreen views on two monitors. Search for recordings with motion in a target area. Four internal hard drives provide additional storage.



**DVMRe Matrix:** This multichannel recorder offers Triplex capability and adds matrix switching to your recording system. Send any camera view to any monitor, increasing your viewing options. Four internal hard drives provide additional storage.



**DVMRe Pro:** DVMRe Pro takes the DVMRe line one step further by adding one button printing capability and an internal CD or DVD writer with one-button recording. In addition, DVMRe Pro includes a Turbo Recording mode for capturing images at 120 frames per second (fps).



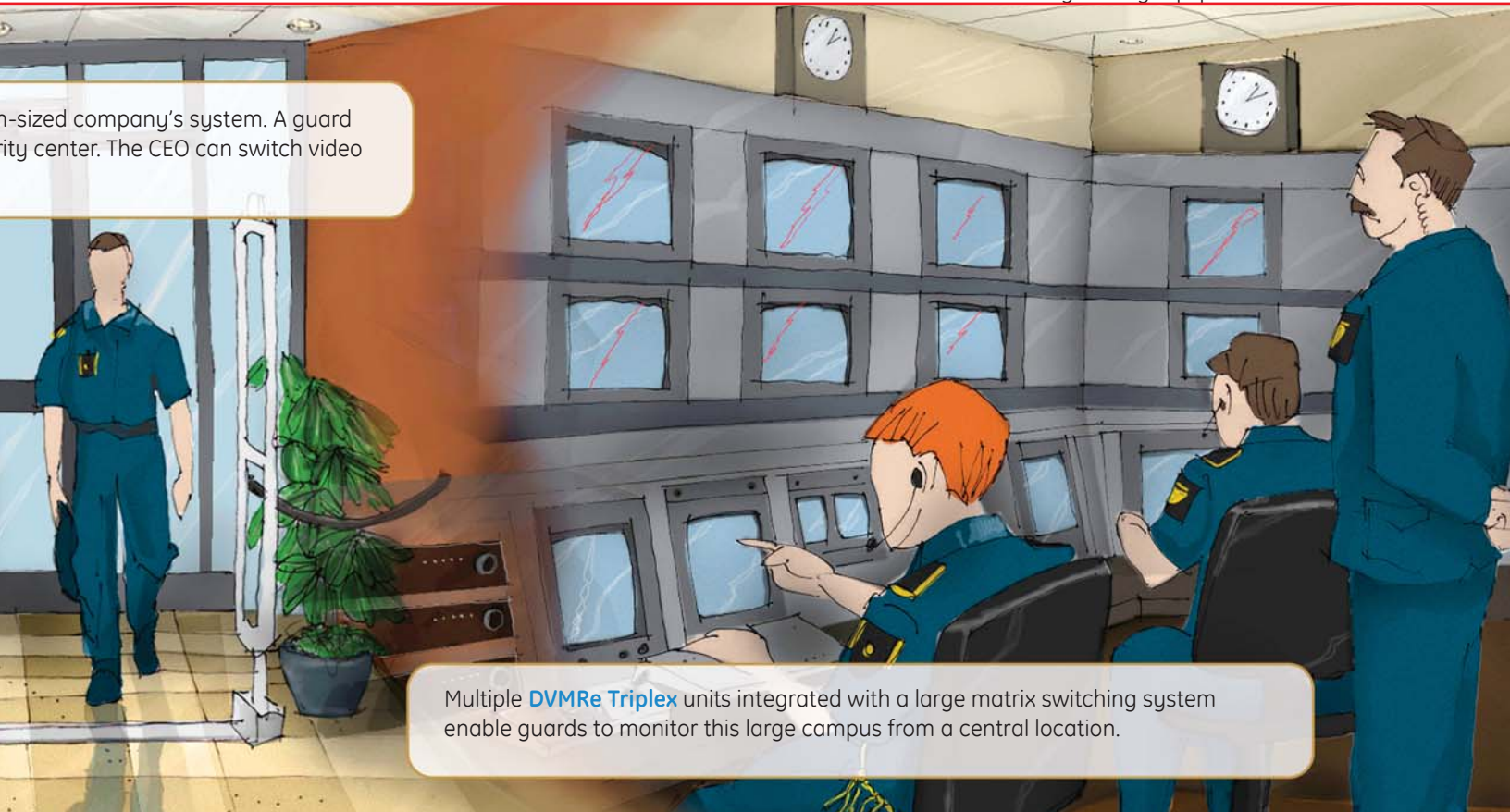
**VDR:** This single-channel recorder is an economical VCR replacement. It plugs directly into existing VCR applications, including single-camera systems and multi-camera systems with multiplexers. It features VCR-like controls and a removable hard drive.



**DVSe:** This digital video archiving system extends the storage capacity of your digital recorder. You can plug in as many as eight hard disk drives to the DVSe. You can access stored recordings directly through your digital recorder or by using WaveReader software.



**SymDec:** SymDec introduces "hybrid" recording that works with both conventional analog cameras and the new family of GE digital network products. This unique platform provides a graceful migration path to digital recording and at the same time allows continued use of existing analog equipment.



h-sized company's system. A guard  
nity center. The CEO can switch video

Multiple **DVMRe Triplex** units integrated with a large matrix switching system enable guards to monitor this large campus from a central location.



**StoreSafe Pro:** This multichannel recorder offers Triplex capability and more ways to distribute evidence. One-button printing enables you to share still images. A built-in CD recorder transfers video clips to a CD that anyone with a PC can read—without special software.



**StoreSafe Pro II:** This digital recorder offers you all the power of the StoreSafe Pro, but with the added benefit of WaveJet technology. This technology allows you to record twice as much information on the same size hard drive.



**ClearCast:** This multichannel recorder lets you record video from hundreds, even thousands, of cameras at up to 30 frames per second. And it provides unbeatable image aquality. Advanced compression technology lets you store 30 days or more of high-quality video.

# Expanding your system's capabilities

Right out of the box, your GE digital recorder is a powerful tool you can use to protect your organization and manage it remotely. To make your digital recorder even more convenient to use, you can add a keypad to control and configure it remotely. Or you can install WaveReader software on any PCs in your network from which you want to view live or recorded video.

To make your recorder an even more powerful and easy-to-use tool for your business, you can add a special interface that captures ATM or point-of-sale (POS) text and associates it with recorded video. It gives you more options when you're searching for important recordings.



## Digital keypads

GE offers keypads that let you program and control your surveillance equipment remotely. You can use a keypad to select and switch views from different cameras connected to your digital recording system, even controlling which monitors they display on. Keypads also provide remote control of

pan/tilt/zoom cameras, with three-axis joystick control that lets you move cameras for instantly customized live views. Our keypads even control matrix switchers, including Digiplex matrix switching systems.



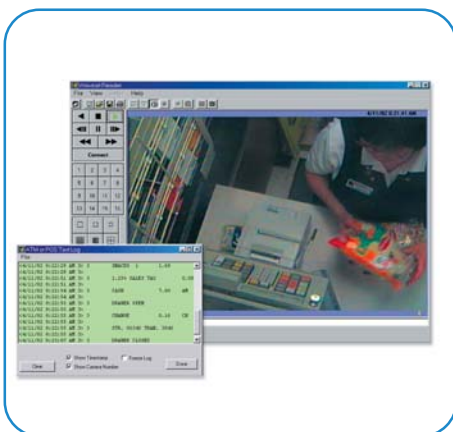
## Software Tools

Our WaveReader software gives you remote access to live or recorded images through a network or telephone connection. WaveReader ships with all DVMRe models, StoreSafe models and the DSR-2000e. WaveReader extends the advantages of digital recording to authorized users anywhere on your network—or anywhere in the world.

Using WaveReader, you can view live video from any camera in your network or search for recorded images by camera, time and date, alarm, event or receipt text. You can choose from a variety of screen display modes, from full-screen to a 64-way multiscreen

view. Once you have the images you want, WaveReader lets you enhance them by zooming in on selected areas or adjusting contrast, hue, sharpness and more. Then you can save images or even e-mail them to law enforcement officials or others. You can also use WaveReader to remotely control pan/tilt/zoom cameras over an Ethernet connection.

Using WaveWatch health check software, you can ensure that your recorder is operating efficiently all the time by running reports on the health of your system.



## ProBridge ATM/POS interface

Add a ProBridge interface to your recording system to capture and record ATM or point-of-sale (POS) text along with your security video. Now you can search recorded video by any combination of time and date, camera

or receipt text. Just type in a search for text: "No Sale," "Return," a transaction number or even an individual product name. You can instantly view the video that corresponds to that transaction.



# About GE Security

GE Security is a global technology leader dedicated to helping customers protect their people, their property, their customers and their bottom line. We are a wholly owned subsidiary of GE. Like our parent company, we maintain a sharp focus on product and service innovation, world-class manufacturing practices and operational excellence. Our electronic security products fall into three principal categories.

## Visit GE Security on the Web today

You can download product literature for every GE digital recorder—and all our other security products—at our Web site, [www.gesecurity.com](http://www.gesecurity.com).

**Security and life safety:** Fire, intrusion and motion detection equipment; panic buttons; and notification appliances like bells, horns and strobes. GE Security is the leading manufacturer of supervised wireless security and life safety systems.

Wireless products enable you to install security systems where it is difficult or impossible to run wires for hard-wire security. Our Learn Mode® technology has been a key factor driving the growth of the wireless security market around the world.

**Enterprise technologies:** Access control, video surveillance, video image storage and retrieval, and fiber-optic audio, data and video transmission. GE Security can integrate all surveillance and access control functionality into a single enterprise-wide system for global companies.

**Key control and asset tracking:** Products and services for remote site entry, mobile access and information management, and asset tracking and control.

## The service you expect

When you work with GE Security, you have access to experts who dedicate their time to understanding digital recording applications for organizations like yours. We also maintain partnerships with security system integrators who have experience working with many kinds of organizations. Retaining experts on staff and building these partnerships help us deliver the high level of service we know you expect.

## The security that comes from working with a partner like GE Security

For 125 years, GE has provided reliable products and exceptional service to customers like you, and GE Security continues that tradition. We are always looking for ways to put new technology to work for you. In fact, we're often responsible for creating it. That means we'll be there to help you use new technology to maintain a secure environment. And we offer something that's hard to put a value on: the sense of security that comes with knowing you're working with the fifth largest company in America, a company that has been creating new technologies to make our lives better for more than a century.



U.S.  
T 888 GE SECURITY  
F 541 752 9097

Europe  
T 32 2 725 11 20  
F 32 2 721 86 13

Asia  
T 852 2907 8108  
F 852 2142 5063

Latin America  
T 305 593 4301  
F 305 593 4300

Australia  
T 61 3 9259 4700  
F 61 3 9259 4799



imagination at work