

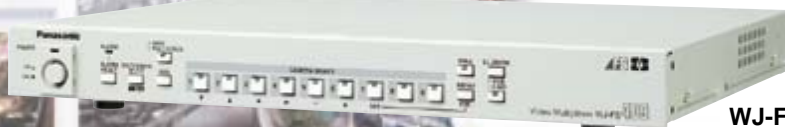
Panasonic®



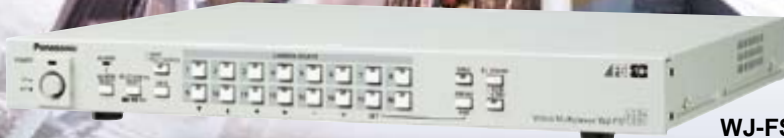
Digital Duplex Color Multiplexers

WJ-FS409(9ch)

WJ-FS416(16ch)



WJ-FS409



WJ-FS416

Introducing High-Performance, Low-Cost, Digital Duplex Color Multiplexers from Panasonic.



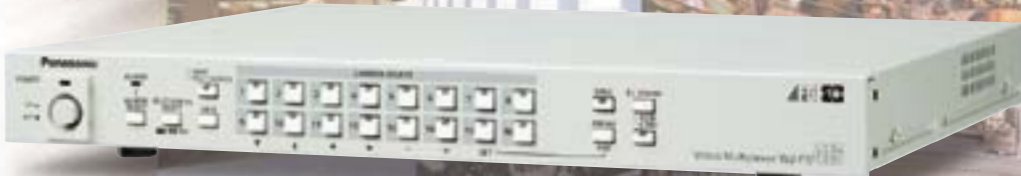
Using multiplexed recording, Panasonic digital duplex color multiplexers make it possible to record video streams from multiple monitor cameras to a single recording system (digital disk recorder ; WJ-HD100 or time-lapse VCR). The need for increased monitoring is boosting demand for more surveillance cameras. This requires improved system performance. With Panasonic multiplexers WJ-FS409(9-channel) and WJ-FS416(16-channel), it is possible to effectively utilize multiple cameras for viewing high-quality

recorded images.

Various digital image-processing effects can be applied to obtain a high quality image. Standard functions include fault detection, title display, and electronic zoom. Panasonic has combined its construction expertise with its proprietary video technology to develop this line of multiplexers. Panasonic's digital duplex color multiplexers are the key component to an effective surveillance system.



Digital Duplex Color Multiplexer
WJ-FS409(9ch)
PS•Data



Digital Duplex Color Multiplexer
WJ-FS416(16ch)
PS•Data



Duplex technology

With digital color duplex circuits, a system can handle multiplex recording and multi-view monitor image display simultaneously.

High picture quality

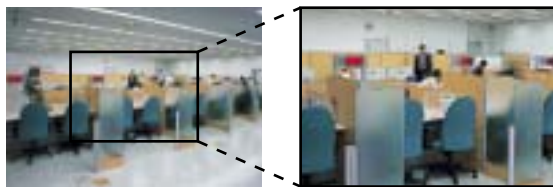
With the help of a correcting function and other digital picture processing functions, the WJ-FS409 and WJ-FS416 produces a high quality picture of up to 720H x 480V pixels.

High quality recording out

The WJ-FS416 and WJ-FS409 use LC filters, and the WJ-FS409/416 capture images at a rate of 15 fields/sec.

2x zooming function

Enlarge a reproduced image by two times and display it on a full screen for better clarity.

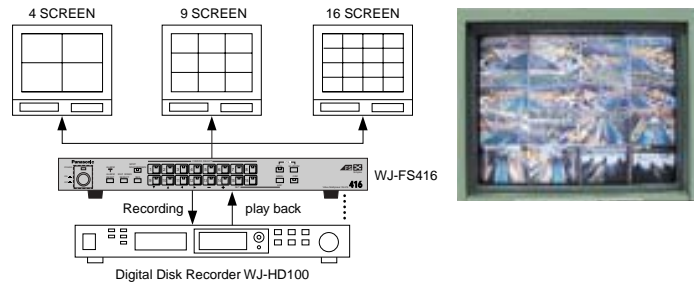


Multi screen displays

The WJ-FS409 can connect up to 9 cameras, and the WJ-FS416 can connect up to 16. Images can then be recorded to a single time-lapse VCR. While monitoring, the field switching systems can recorder images at a maximum rate of four fields (1/15 s intervals) per camera, and images can be played back as full screen or split-screen (4, 9, 16 views) displays. An

alphanumeric title is added to each video stream, making it easier to keep track of the viewing area.

Example of WJ-FS416



Camera control PS-Data

The optional system controller ; WV-CU360C can be used to activate a range of camera functions such as PTZ, auto pan, focus, iris and menu function setup via PS-Data (Panasonic Security Data) System.

Alarm capability

Multi screen mode

When an alarm is triggered for monitor output, the image stream from that channel will be displayed full-screen, along with the title of the alarm channel.

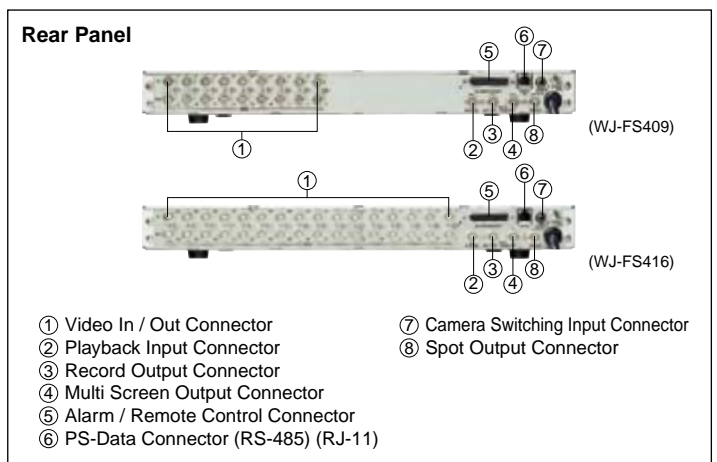
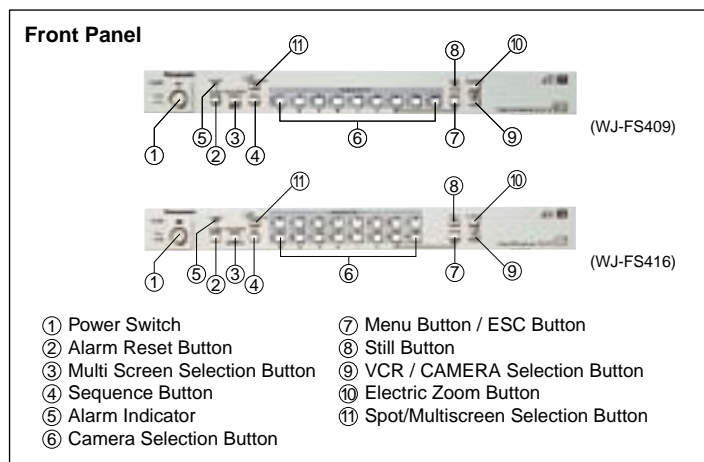
Multiplex recording mode

Alarm priority recording is available.

Space saving design

The WJ-FS409/FS416 compact design allows for the configuration of an efficient system in terms of space.

MAJOR OPERATING CONTROLS



RECORDING MODE OF PANASONIC AG-6740 & SWITCHING INTERVALS

(WJ-FS409/416 SW300=on)

Recording Mode	2H	6H	12H	18H	24H	48H	72H	96H	120H	180H	240H	480H	Multiplexers
Recording Interval (Sec)	0.08	0.12	0.15	0.23	0.43	0.63	0.83	1.03	1.53	2.03	4.03	4.03	WJ-FS409/FS416
Recording Interval from ch 1 to ch 1 (Sec)	4 cameras	0.31	0.54	0.70	1.01	1.94	2.87	3.81	4.74	7.07	9.41	18.74	WJ-FS409/FS416
	9 cameras	0.69	1.21	1.56	2.25	4.33	6.41	8.49	10.57	15.77	20.97	41.77	WJ-FS409/FS416
	12 cameras	0.84	1.48	1.93	2.74	5.27	7.81	10.34	12.88	19.21	25.54	50.87	WJ-FS416
	16 cameras	1.07	1.87	2.40	3.47	6.67	9.87	13.07	16.27	24.27	32.27	64.27	WJ-FS416

*Above figures are using Panasonic Time Lapse VCR : AG-6740

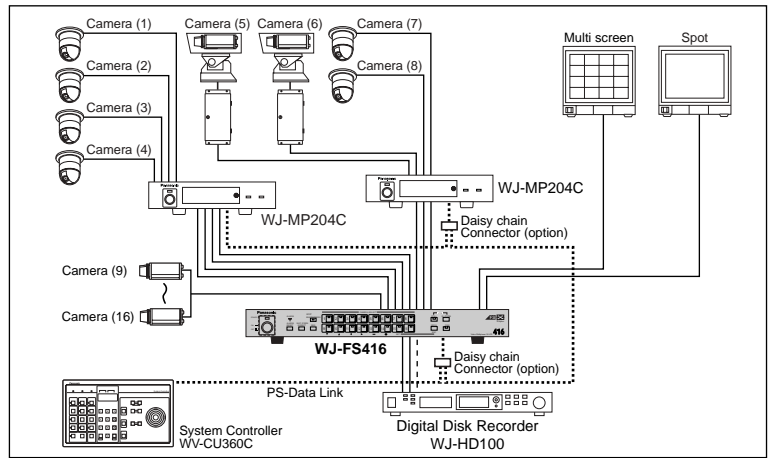
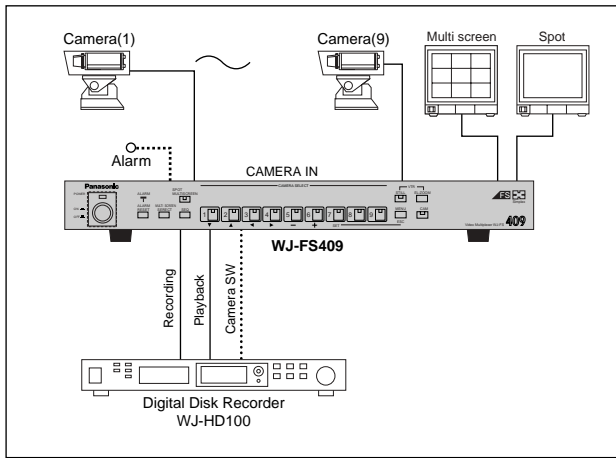
RECORDING MODE OF PANASONIC WJ-HD100 & SWITCHING INTERVALS

(WJ-FS409/416 SW300=on)

Recording Mode	18H	24H	48H	72H	96H	120H	180H	240H	480H	960H	Multiplexers	
Recording Interval (Sec)	0.07	0.10	0.17	0.24	0.31	0.37	0.59	0.77	1.67	3.34	WJ-FS409/FS416	
Recording Interval from ch 1 to ch 1 (Sec)	4 cameras	0.31	0.47	0.78	1.11	1.41	1.73	2.74	3.59	7.78	15.56	WJ-FS409/FS416
	9 cameras	0.69	1.04	1.73	2.48	3.15	3.85	6.12	8.00	17.33	34.67	WJ-FS409/FS416
	12 cameras	0.84	1.27	2.11	3.01	3.84	4.69	7.45	9.74	21.11	42.22	WJ-FS416
	16 cameras	1.07	1.60	2.67	3.81	4.85	5.93	9.41	12.31	26.67	53.33	WJ-FS416

*Above figures are using Panasonic Digital Disk Recorder : WJ-HD100 ; 40GB, audio off, SF mode

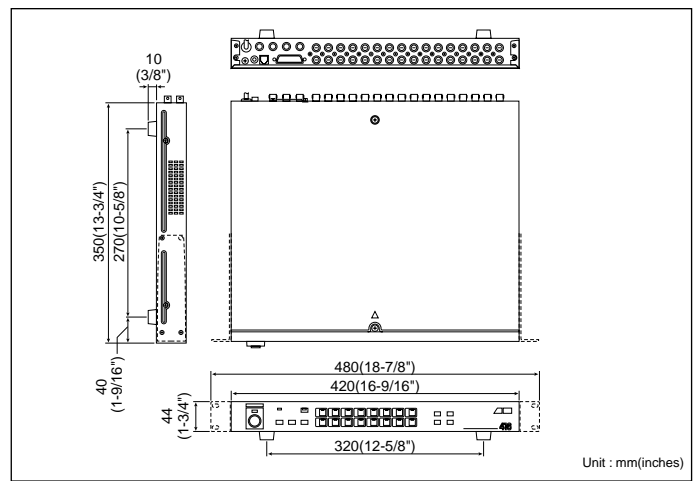
●SYSTEM EXAMPLES



●SPECIFICATIONS

Model No.	WJ-FS409	WJ-FS416
Camera Input No.	9 cameras	16 cameras
Power Source	120 V AC, 60 Hz	
Power Consumption	14 W	
Camera Input	1.0 v [p-p] / 75 Ω, 2:1 interlaced composite video signal	
Playback Input	1.0 v [p-p] / 75 Ω, composite video signal	
Camera Switching Input	1RCA pin jack	
Sampling Frequency	4 fsc, 17 MHz	
Quantizing	8 bit	
Pixels	720 H x 480 V	
Minimum Switching Interval(Rec.out)	4 fields	
Spot Out	1.0 v [p-p] / 75 Ω, composite video signal	
Data Input	RS485 (RJ-11)	
Camera Output	1.0 v [p-p] / 75 Ω, automatic termination looped through	
Recording Output	1.0 v [p-p] composite video signal, multiplexed with camera ID	
Multi Screen Out	1.0 v [p-p] / 75 Ω, composite video signal	
Alarm/Remote Control	25-pin D-sub connector	
Ambient Operating Temperature	-10°C ~ +50°C (14°F ~ +122°F)	
Ambient Operating Humidity	Less than 90 %	
Dimensions(W x H x D)	420 x 44 x 350mm	16-9/16" x 1-3/4" x 13-3/4"
Weight (approx.)	4 kg (8.8 lbs.)	
Standard Accessory	EIA 19-type rack-mount bracket	

●DIMENSIONS



OPTIONAL COMPONENTS & ACCESSORIES

Color Surveillance Cameras



SDII

Super Dynamic II Color Dome Camera with Low-Light B/W Mode
WV-CS854A



Weather Proof & Vandal Resistant Color Dome Camera with Low-Light B/W Mode
WV-CW864



SDII

Vandal Proof Super Dynamic II Color Cameras with Low-Light B/W Mode
WV-CW474 Series



(Lens:option)
Color Surveillance Cameras with low-light B/W mode
WV-CL920A Series



(Lens:option) **SDII**
Super Dynamic II Color Surveillance Cameras
WV-CP470 Series



(Lens:option)
Color Surveillance Cameras
WV-CP240 Series

B/W Surveillance Cameras



(Lens:option)

1/3-type B/W CCD Cameras
WV-BP330 Series



(Lens:option)

1/3-type B/W CCD Cameras
WV-BP140 Series

Surveillance Recorders



Time Lapse VCR
AG-6740



Digital Disk Recorder (built-in 40GB HDD)
WJ-HD100
PS•Data



Data Multiplex Unit
WJ-MP204C
PS•Data



System Controller
WV-CU360C
PS•Data



System Controller
WV-CU550C
PS•Data

• All TV pictures are simulated. • Weights and dimensions are approximate. • Specifications are subject to change without notice. • These products may be subject to export control regulations.

Panasonic

DISTRIBUTED BY:

Panasonic Security & Digital Imaging Company
A Division of Matsushita Electric Corporation of America

Security Systems Group

Executive Office : One Panasonic Way 3E-7, Secaucus, New Jersey 07094
Zone Office
Eastern : One Panasonic Way, Suite 3E-7, Secaucus, NJ 07094(201)348-7303
Central : 1707N, Randall Road, Suite1C-2, Elgin, IL 60123(847)468-5205
Western : 6550 Katella Avenue, Suite17A-5, Cypress, CA 90630(714)373-7840
<http://panasonic.com/ctv>

PANASONIC CANADA INC.
5770 Ambler Drive, Mississauga, Ontario, L4W 2T3 Canada (905)624-5010
PANASONIC SALES COMPANY
DIVISION OF MATSUSHITA ELECTRIC OF PUERTO RICO, INC.
San Gabriel Industrial Park 65th Infantry Ave. KM.9.5 Carolina, P.R. 00985(809)750-4300

Printed in Japan
WJ-JHFS416C(2P-485C)