

# Tour Sound Products

Perhaps more than any other single company in the professional sound industry, JBL Professional, under the guiding wisdom of founder James B. Lansing, has shaped large scale forms of public entertainment we now take for granted. Through Mr. Lansing's development of revolutionary transducers and the resulting sound reinforcement technologies, concerts and special events of all types can now enjoy exceptional sound quality.

JBL has continued this tradition of revolutionary technology with the introduction of VERTEC® – a flexible, high performance product line with compact, midsize and full-size line array elements and companion subwoofers. It's the ideal solution to a broad range of sound reinforcement challenges for both portable rental inventories, and fixed performance-venues.

Harman Pro Group | 2006

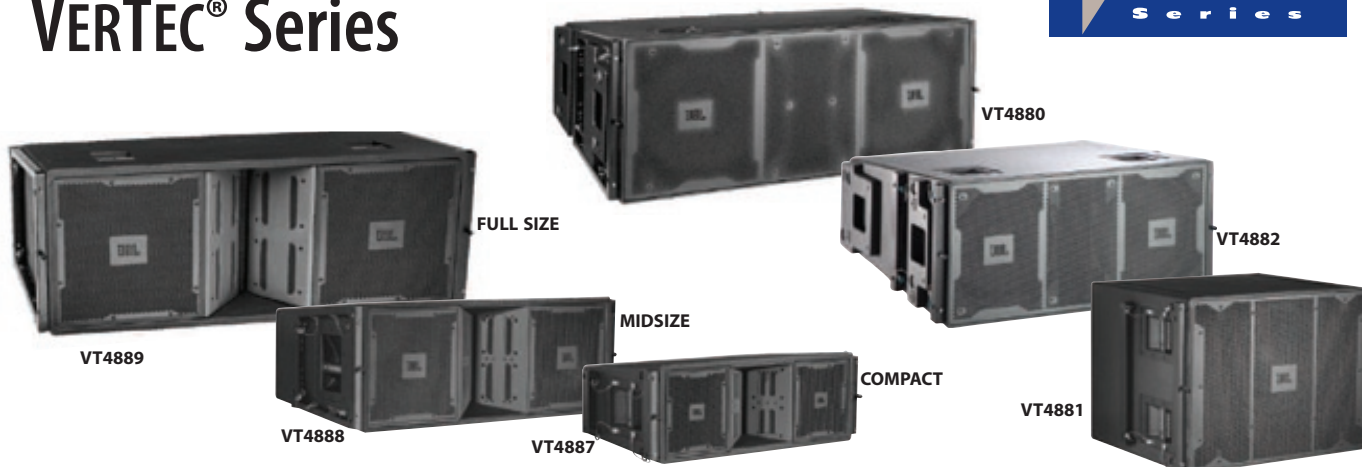
Section:  
06

JBL  
PROFESSIONAL

JBL VERTEC® VT4889 line array systems  
2005 Cream Reunion Concert  
Royal Albert Hall: London, England  
Sound System Supplier: Concert Sound, Ltd (Luton, England)



# VERTEC® Series



JBL's early research into column-type line arrays over 25 years ago provides a solid foundation to VERTEC – Line arrays with lineage. Combining JBL's latest generation of high-powered lightweight transducers with proven line array theory, precisely-adjustable array elements and an accurate predictive software application, this industry-leading product line enables tour sound system operators, rental companies and performance venues to achieve predictable, consistent results. And for maximum flexibility, models VT4882, VT4887 and VT4888 are "Power-Ready": pre-engineered to accept optional self-powered amplifier modules with integral digital signal processing.



### VERTEC® VT4889 VT4889

The **VT4889** is a full size, light-weight enclosure housing two 15" woofers, four 8" midrange radiators, and three high frequency compression drivers. These advanced components provide the highest power-to-weight ratio of any speaker in the full-size line array class.



### VERTEC® VT4887 VT4887

The **VT4887** is a compact, lightweight line array element housing two 8" woofers, four 4" midrange radiators, and two high frequency compression drivers. Offering high output for its size, it can be used in stand-alone arrays or in combination with other VERTEC system products.

### VT4882

The **VT4882** is a midsize, lightweight centrally vented subwoofer enclosure housing two long-extension 15" woofers. These advanced components, each with dual voice coils, provide high output capabilities and an advantageous power-to-weight ratio.

### VT4888

The **VT4888** is a midsize, lightweight line array element housing two 12" woofers, four 5 1/2" midrange radiators, and two high frequency compression drivers. It is designed for use in stand-alone arrays or in combination with other VERTEC system products.

### VT4880

The **VT4880** is a fullsize, lightweight centrally vented subwoofer enclosure housing two 18" woofers. These advanced components, each fitted with dual voice coils, provide high output capabilities for an arrayable enclosure fully compatible with the VT4889 full range system.

### VT4881

The **VT4881** is a compact, lightweight, vented subwoofer enclosure housing a dual voice coil 15" woofer. This advanced component has a compliance capable of a 3" (76 mm) peak-to-peak cone excursion for true very low frequency performance to 18 Hz.

## specifications

	VT4889	VT4888	VT4887	VT4880	VT4882	VT4881
SYSTEM TYPE	Full size Three-way	Midsize Three-way	Compact Bi-amped Three-way	Full size 8" Subwoofer	Midsize Dual 15" Subwoofer	Compact 15" Subwoofer
FREQUENCY RESPONSE	45 Hz - 16 kHz (± 3 dB)	60 Hz - 16 kHz (± 3 dB)	80 Hz - 20 kHz (± 3 dB)	28 Hz - 75 Hz (± 3 dB)	32 Hz - 110 Hz (± 3 dB)	22 Hz - 125 Hz (± 3 dB)
COVERAGE (H) -6 dB	90° nominal	90° nominal	100° nominal			
SENSITIVITY: 1 W, 1 m	LF: 99 dB, MF: 102 dB, HF: 116 dB	LF: 98 dB, MF: 102 dB, HF: 114 dB	LF: 97 dB, MF/HF: 101 dB	LF: 98 dB (2.83v/1m)	LF: 95 dB (35 Hz - 120 Hz)	LF: 90 dB (2.83v/1m)
NOMINAL IMPEDANCE	LF: 2 x 8 ohms, MF: 8 ohms, HF: 16 ohms	LF: 2 x 8 ohms, MF: 8 ohms, HF: 16 ohms	LF: 8 ohms, MF/HF: 8 ohms	LF: 2 x 8 ohms	LF: 8 ohms (Each coil independently wired)	LF: 8 ohms (Each coil independently wired)
INPUT POWER RATING <sup>1</sup> : LF MF HF	2000 W 1400 W 225 W	2000 W 600 W 150 W	2000 W 225 W (MF/HF)	2000 W	2000 W	1000 W
TRANSDUCERS: LF MF HF	2 x 2255H (15 in) 4 x 2250H (8 in) 3 x 2435H	2 x 2262H (12 in) 4 x 2106H (5 1/2 in) 2 x 2431H	2 x 2168J (8 in) 4 x 2104H (4 in) 2 x 2407H	2 x 2258H (18 in) (Dual-Coil)	2 x 2266H (15 in) (Dual-Coil)	1 x 2256G (15 in) (Dual-Coil)
ENCLOSURE FINISH	Wedge Frustrum DuraFlex™	Wedge Frustrum DuraFlex	Wedge Frustrum DuraFlex	Wedge Frustrum DuraFlex	Wedge Frustrum DuraFlex	Rectangular parallel piped DuraFlex
INPUT CONNECTORS	NL8, 2 each	NL8, 2 each	NL8, 2 each	NL4, 2 each	NL8 and NL4, 2 each	NL8, 2 each
DIMENSIONS (H x W x D)	489 x 1213 x 546 mm 19.25 x 47.75 x 21 in	355 x 991 x 508 mm 14 x 39 x 20 in	279 x 787 x 406 mm 11 x 31 x 16 in	493 x 1229 x 860 mm 19.42 x 48.38 x 33.85 in	457 x 1013 x 858 mm 18 x 39.9 x 33.8 in	559 x 787 x 686 mm 22 x 31 x 27 in
NET WEIGHT (each)	72 kg (159 lb)	49 kg (108 lb)	28 kg (62 lb)	59.9 kg (132 lb)	52 kg (114.6 lb)	55 kg (120 lb)

<sup>1</sup> AES standard, one decade pink noise with 6 dB crest factor within device's operational band, free air. Standard AES 2 hour rating plus long term 100 hour rating are specified for cone transducers.



# VERTEC®

## Flexible Line Array Solutions

All models in the VERTEC product line are engineered to offer sound reinforcement professionals solutions to meet nearly any challenge. Each model is compatible with others in the line, both mechanically and acoustically. With built-in advantages like lightweight construction, high output, and integral rigging hardware, each VERTEC model is designed to deliver premium-quality audio for a wide range of applications including concert touring, corporate A/V system support, and fixed systems in performance venues.

### HIGH-PERFORMANCE FEATURES

Each model in the VERTEC system family includes a suite of high performance technologies, engineered to work together to maximize utility and audio performance.

**PlyMax™ enclosure technology** is used for constructing the VT4888, VT4887, VT4882, VT4881 and VT4880 systems. PlyMax offers rigid enclosure characteristics along with dramatic weight savings. The flagship model VT4889 features an advanced composite shell.

**Advanced Transducers** give each VERTEC system its performance edge. Like the full-size VT4889 and VT4880 subwoofer, each compact and midsize model features loudspeaker components with neodymium magnets, and dual voice-coil woofers. This combination enables the exceptionally high output characteristics the VERTEC line is legendary for, while ensuring pristine, low-distortion audio reproduction for any type of speech or music.

**Precision waveguides** are coupled to the advanced-technology drivers to create an uninterrupted vertical 'ribbon' of high frequency energy in the full-range system.

**Radiation Boundary Integrators™** in the midrange section of each system serve a dual purpose. The patented RBI reduces diffraction effects and smooths high frequency coverage.

**Robust low frequency components** are a hallmark of the entire line. All woofers rely on dual voice coil technology for unparalleled output capabilities.

### TOUR-READY SYSTEMS

Each model in the VERTEC line is intended to support the type of rugged use encountered when professional-quality loudspeaker systems are transported from venue to venue, supplying audio support services for a broad range of musical programs and special events. Care has been given to system design ergonomics, making VERTEC arrays among the simplest and fastest to setup and takedown.

All enclosures feature JBL Professional's rugged DuraFlex™ exterior finish. Each system features loudspeaker components with weather-resistant cone treatment.

### S.A.F.E.™ SUSPENSION HARDWARE

All models in the VERTEC line are fitted with integral end-mounted rigging frames. These load-rated, heat-treated, premium-grade tubular frames couple together using quick-release pins and hinge bars to create arrays that are rigid for maximum strength, yet flexible in design and application.

### ARRAY FRAME OPTIONS

The VERTEC suspension system includes several frame options for hanging arrays of various sizes. "AF" (Array Frames) and "SF" (Short Frames) are available in each size for use with compact, midsize and full-size line array elements. The Short Frames can also be used as an 'anchor' at the bottom of large arrays, if a separate pickup point is required to tilt the array. These frames are also suitable for ground-stacking up to 6 enclosures (AF models) or 4 enclosures (SF models).

### LINE ARRAY CALCULATOR SOFTWARE

Available to system users, this MSExcel-based application provides a wealth of technical information about VERTEC line array system designs and their performance expectations in various audience seating areas.



VT4888 Line Array System



VT4882 Subwoofer Line Array



VT4881 Subwoofer Line Array



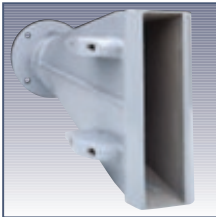
VT4887 Line Array System

# VERTEC SERIES key features

- INDUSTRY'S SMALLEST, LIGHTEST, MOST POWERFUL HIGH FREQUENCY COMPRESSION DRIVERS

- ADVANCED TECHNOLOGY COMPONENTS
- PRECISION WAVEGUIDES COUPLE TO CREATE HF VERTICAL SLOT APERTURE
- RADIATION BOUNDARY INTEGRATOR (RBI™) TECHNOLOGY INTEGRATES OUTPUT OF INDIVIDUAL BANDPASS ELEMENTS

- EXCEPTIONALLY RIGID, LIGHTWEIGHT ENCLOSURE CONSTRUCTION
- RUGGED DURAFLEX™ EXTERIOR FINISH AND WEATHERIZED COMPONENTS
- INTEGRATED S.A.F.E.™ SUSPENSION SYSTEM



PRECISION WAVEGUIDES



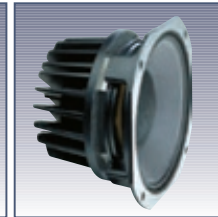
RBI™: RADIATION BOUNDARY INTEGRATOR



INPUT PANEL WITH PARALLEL CONNECTORS



2255H 15" DIFFERENTIAL DRIVE® LOUDSPEAKER



2250H 8" MIDRANGE CONE TRANSDUCER



2435H HIGH PERFORMANCE COMPRESSION DRIVER

## VERTEC® SYSTEM FEATURES

## VT4889 SYSTEM COMPONENTS

# accessories

These accessories ship with the VT4889 and are also available as replacement items.

- VT4889-DOLLY** Dolly; doubles as protective front cover 11.4 kg, 25 lb.
- VT4889-COVER** Ballistic nylon and aluminum-reinforced 3.6 kg, 8 lb.
- VT4889-RIG** Set of (4) Hinge bars, includes (2) long/rear (set of four) and (2) short/front, including slider knobs for each short (front) hinge bar. 4.2 kg, 9.3 lb.

These accessories are also available for the VT4889 and VT4880.

- VT4889-MSP** (Mechanical Spares Kit, hardware parts). Order 1 for each 12 VT4889s used in portable/tour conditions.
- VT4889-ASP** (Acoustical Spares Kit, transducers). Order 1 for each 12 VT4889s used in portable/tour conditions.
- VT4880-ACC** Accessory Kit for subwoofer, with wheelboard/dolly plate, cover bag, and required suspension hinge bars.
- VT4889-AF** Array Frame for supporting VT4889 and/or VT4880 enclosures or for ground stacking either full-size model.
- VT4889-SF** Short Frame for use on the bottom of larger VT4889 arrays, suspending special purpose arrays, or for ground stacking up to four VT4889 enclosures.

Available accessories for models VT4888, VT4887, VT4882, VT4881

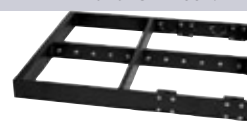
- VT4888-MSP** (Mechanical Spares Kit, hardware parts). Order 1 for each 12 VT4888s used in portable/tour conditions.
- VT4888-ASP** (Acoustical Spares Kit, transducers). Order 1 for each 12 VT4888s used in portable/tour conditions.
- VT4887-MSP** (Mechanical Spares Kit, hardware parts). Order 1 for each 12 VT4887s used in portable/tour conditions.
- VT4887-ASP** (Acoustical Spares Kit, transducers). Order 1 for each 12 VT4887s used in portable/tour conditions.
- VT4888-AF** Array Frame for supporting VT4888 or VT4882 enclosures, or for ground stacking either midsize model.
- VT4888-SF** Short Frame for use on bottom of larger VT4888 or VT4882 arrays, suspending special purpose arrays, or for ground stacking either midsize model.

VERTEC line array elements are available with dolly wheelboards that double as a protective front plate, and reinforced, padded cover bags for maximum protection during handling and transport. Shown here on end, a VT4888 line array element with dolly and cover.



Necessary accessories; order separately for VT4888, VT4887, VT4882, VT4881

- VT4888-ACC** Dolly/wheelboard front plate and padded protective cover bag for one VT4888.
- VT4887-ACC** Dolly/wheelboard front plate and padded protective cover bag for one VT4887.
- VT4882-ACC** Dolly/wheelboard front plate and padded protective cover bag for one VT4882.
- VT4881-ACC** Dolly/wheelboard front plate and padded protective cover bag for one VT4881.



VT4889-AF (Array Frame)



VT4889-SF (Short Frame)

- VT4887-AF** Array Frame for supporting VT4887 enclosures or VT4881 subwoofers, or for ground stacking compact models.
- VT4887-SF** Short Frame for use on bottom of larger VT4887 or VT4881 arrays, suspending special purpose arrays, or for ground stacking compact models.
- VT4800-CA** Compact Adaptor, use to suspend VT4887s or VT4881s from VT4888s.
- VT4800-DA** Downfill Adaptor, use to suspend up to 4 VT4887s from VT4889s or VT4880s.
- VT4800-UA** Universal Adaptor Frame. Use to suspend midsize or compact models from either the VT4889 full-size arrays or VT4880 subwoofer arrays.

# VERTEC® DP Series

## Self-Powered Integrated Audio Systems



The JBL VERTEC DP Series is a suite of fully integrated audio systems coupling industry-leading loudspeaker technology to the innovative JBL DrivePack™ technology platform. It's a breakthrough in power and control for self-powered systems. JBL's VERTEC DP Series delivers superb audio quality and robust power, perfectly matched to the enclosures, with comprehensive internal digital signal processing. Based on JBL's industry-leading VERTEC line array elements, these systems are lightweight, powerful, and cost-effective.

Designed in cooperation with Harman professional development partners Crown and dbx, JBL DrivePacks are designed to exceed all expectations for loudspeaker performance, power handling and audio system control. First products available in the VERTEC DP series, the VT4888DP three-way midsize line array element and VT4882DP midsize subwoofer are available with DP3 DrivePack units pre-configured from the JBL factory.

### INPUT MODULE & CONNECTIVITY

JBL DrivePacks are equipped with a modular input bay. Standard DPIP input modules from dbx feature analog audio inputs and sophisticated DSP technology incorporating digital pre-equalization filters, frequency-dividing networks, and limiter circuitry. Classic dbx Limiting functionality, dbx Type IV® analog-to-digital converters, and full bandpass and crossover configurations are all packed into the standard input module on every JBL DrivePack unit.

Optional networked input modules for remote control and monitoring are HiQnet-compatible.

### VT4888DP

The **VT4888DP** is a self-powered, light-weight Integrated Audio System housing two 12" woofers, four 5.5" midrange radiators and two high frequency compression drivers. It is equipped with a JBL DrivePack™ DP3 fully integrated power and DSP electronics package.

The VT4888DP is designed to deliver high-quality reinforcement of music and speech in a variety of applications including concert audio and corporate A/V presentations of all types for both portable users and fixed venue installations.

### VT4882DP

The **VT4882DP** is a self-powered, lightweight, centrally vented subwoofer enclosure housing two long extension 15" woofers and a JBL DrivePack™ DP3 fully integrated power and DSP electronics package.

The VT4882DP is designed to deliver high quality sound reinforcement of sub-low frequencies for live music and a variety of other applications. Typical uses include concert audio and multi-media presentations of all types. The VT4882DP is an Ideal companion to VT4888 or VT4888DP midsize three-way systems.



DPIP Standard Input Module with analog audio



DPAN Optional HiQnet Input Module with analog audio and ethernet connectivity



DPCN Optional HiQnet Input Module with CobraNet™. Digital audio, ethernet connectivity

# key features

- ▶ INTEGRATED DIGITAL SIGNAL PROCESSING
- ▶ JBL DRIVEPACK® DP3 ELECTRONICS PACKAGE
- ▶ AUTOMATIC SELECTION OF 50 or 60 Hz WORLD-WIDE AC LINE VOLTAGES
- ▶ OPTIONAL NETWORK INPUT MODULES



VT4882DP Subwoofer



VT4888DP Line Array Element

# specifications

	VT4888DP	VT4882DP
<b>SYSTEM TYPE</b>	Self-Powered Midsize 3-way Line Array, Integrated Audio System	Self-Powered Arrayable 2-15" Subwoofer, Integrated Audio System
<b>FREQUENCY RESPONSE</b>	60 Hz - 16 kHz (± 3 dB)	32 Hz - 110 Hz (± 3 dB)
<b>COVERAGE (H) -6 dB</b>	90° nominal	
<b>250 Hz - 16 kHz</b>		
<b>MAXIMUM PEAK OUTPUT</b>	139 dB, 1M	133 dB SPL, 1m
<b>NOMINAL IMPEDANCE</b>	LF: 4 ohms MF: 8 ohms, HF: 16 ohms	LF: 8 ohms (Each transducer)
<b>DRIVEPACK POWER RATING</b>	6000W Peak, 3000W Continuous	3400W Peak, 1700W Continuous
<b>TRANSDUCERS: LF</b>	2 x 2262H (12 in) (Dual-Coil)	2 x 2266H (15 in) (Dual-Coil)
<b>MF</b>	4 x 2106H (5 1/2 in)	
<b>HF</b>	2 x 2431H (1.5" exit compression driver)	
<b>ENCLOSURE</b>	Wedge Frustrum	Wedge Frustrum
<b>FINISH</b>	DuraFlex™	DuraFlex
<b>INPUT CONNECTORS</b>	Female XLR/Male XLR	Female XLR/Male XLR
<b>DIMENSIONS (H x W x D)</b>	355 x 1013 x 678 mm 14 x 39.9 x 26.7 in	457 x 1013 x 1011 mm 18 x 39.9 x 39.8 in
<b>NET WEIGHT (each)</b>	67.2 kg (148 lb)	69.9 kg (154 lb)



Software Control Panel available in Harman Pro's HiQnet™ System Architect Software

