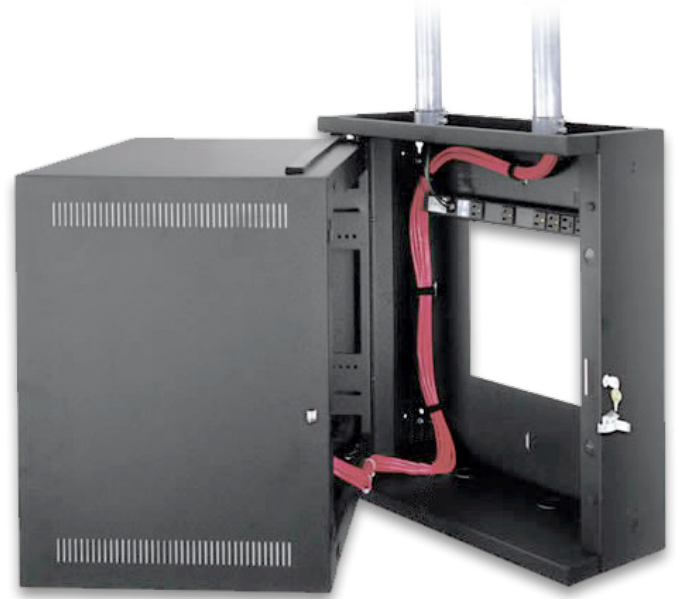


# Rack Enclosure

HC-EQUIP-WRK-12RU



The Rack Enclosure 19 in wall mount provides exceptional quality at an affordable price and is excellent when installing smaller systems in both secured and non-secured areas or when floor space is at a premium.

Cabinet allows secure, yet easy access to both front and rear of mounted components. The Rack Enclosure will support up to twelve of any combination of Telligence Station Gateways™ or Telligence PowerSwitches™.

## Features

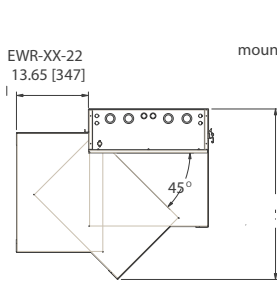
- Tool-free system allows for easy, one-person mounting of the center section to the backpan on the jobsite
- Rack can be mounted for left or right hand swing
- 0.5, 0.75, 1 and 1.5 in electrical knockouts and 0.625 in UHF/VHF antenna knockouts on top and bottom, easily removable for cable pass-through
- 10.5 x 10.5 in laser knockout opening in the backpan for electrical pull-box
- Abundant lacing points throughout the interior facilitate cable management
- Front rail adjustable at 0.125, 0.625 and 1.125 increments for full front-to-rear adjustability
- Durable black textured powder coat finish
- UL Listed in the US and Canada



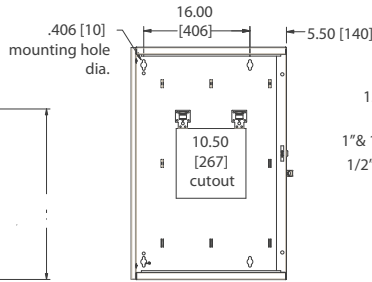
# Physical specifications

Dimensions 71.1 x 59.4 x 55.9 cm  
(HxWxD) (28 x 23.40 x 22.30 in)

**Center Section Clearance**

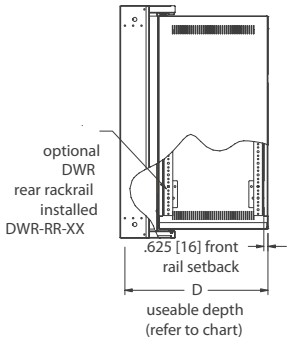
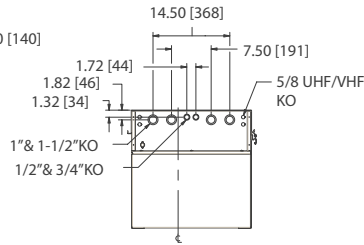


**Front View Back Pan**

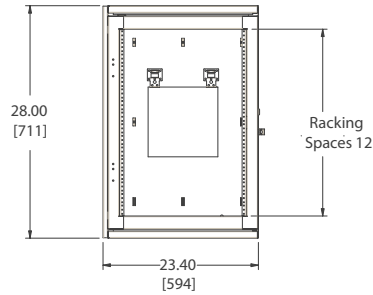


**Top View**

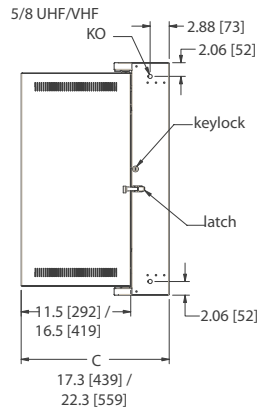
(knockouts pictured in top view are also located on the bottom)



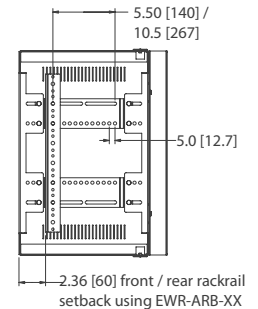
**Side View**



**Front View**



**Side View**



**Side View**  
(shown with option EWR-ARB)

GE Healthcare  
8200 West Tower Avenue  
Milwaukee, WI 53223  
USA

[www.gehealthcare.com](http://www.gehealthcare.com)



© 2009 General Electric Company – All rights reserved.

General Electric Company reserves the right to make changes in specifications and features shown herein, or discontinue the product described at any time without notice or obligation. Contact your GE Representative for the most current information.

Not to be used for installation purposes.

GE and GE Monogram are trademarks of General Electric Company.

Telligence Station Gateway and Telligence PowerSwitch are trademarks of General Electric Company.

GE Medical Systems Information Technologies, Inc., a General Electric company, doing business as GE Healthcare.